

PARKS PLAN 2025

LAKE OSWEGO

Parks, Recreation and Natural Areas System Plan



Citizen Advisory Committee Presentation, July 27, 2011

Goals

- Setting a path for the next 15 years
- Better understanding of the system
- Identifying and serving the needs of LO residents
- Develop a community supported implementation plan



Planning Process





Public Involvement

Community Involvement

Steering Committee

- 12 Citizens - Recommendations

Over 1400 community members to date

- On-line Questionnaire
- Community intercept events
- Open house
- Focus groups
- Interviews
- Youth workshop
- Staff workshop
- On-going PRAB, NRAB, steering committee, and Council involvement

Comp Plan provides additional input



Major Benefits

Parks, recreation and natural areas are *very important* to LO's quality of life, and:

- Protect important places (habitat, historic sites, etc.)
- Enhance health and wellness
- Bring people together
- Make the city visually appealing

(Source: intercepts, open house, questionnaire)



Local Park Character



- Natural areas and elements are highly valued
- Natural environment should be integrated into all developed parks

(Source: focus group, open house, questionnaire)



Close-to-Home Opportunities

- Experience Nature
- Play for Children
- Exercise

(Source: intercept, open house, questionnaire)



Current Recreation Participation



1. Walking for Exercise
2. Walking for Pleasure
3. Dog walking/Dog Parks
4. Gardening
5. Jogging/Running
6. Nature Walks
7. Tennis
8. Bicycling
9. Volunteer Activities
10. Swimming
11. Golf
12. Yoga/pilates

(Source: questionnaire)

Program Improvements

- Aquatics
- Sports/fitness
- Environmental programs
- 50+ age group
- Childcare for adult programs
- Special events

(Source: questionnaire, intercept, open house, focus groups)



Priority Improvements

- Maintaining existing parks
- Major facilities (aquatics, community center, golf, tennis)
- Restoring natural areas
- Trails

(Source: questionnaire, focus groups)





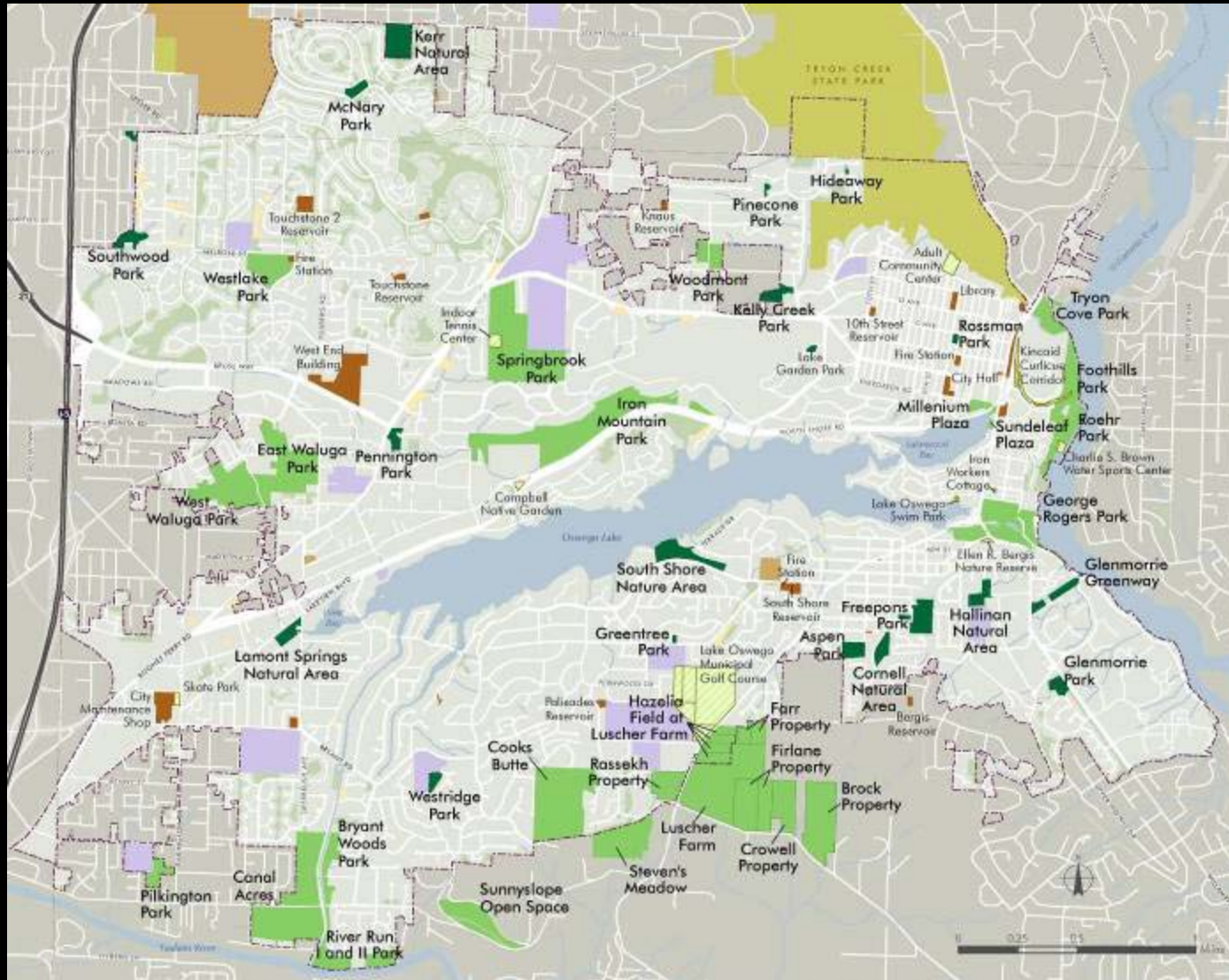
Existing Conditions

Park Lands

Developed parks, natural parks and everything in between

- Over 600 acres of land
- Three categories of park (by scale)
 - Local Parks
 - City-Wide Parks
 - Special Purpose Sites
- Other public open spaces and city property
- School district sites
- Private lands

Existing Park System



Scale: Local Park



Provide basic recreation amenities for neighborhood use and small natural areas that provide relief from urban development or other localized natural benefits

- Freepons Park
- Glenmorrie Park
- Cornell Natural Area

Scale: City-Wide Park

Provide recreation facilities and larger natural areas that benefit the entire community either as destinations or due to their ecological role

- Foothills Park
- George Rogers Park
- Iron Mountain Park
- Cooks Butte Park



Scale: Special Purpose Sites



Provide unique facilities that support a single recreation use, such as golf or skateboarding, for use by the entire community

- Lake Oswego Public Golf Course
- Adult Community Center

Major Recreation Facilities

- Adult Community Center
- Luscher Farm Facilities
- Indoor Tennis Center
- Golf Course
- Water Sports Center
- Sports Fields and Courts



Competitive Sports Fields

Lake Oswego Parks fields

- 24% of all fields

Lake Oswego School District fields

- 76% of all fields



Other Recreation Facilities



- Children's play areas
- Off-Leash dog areas
- Community gardens
- Performance venues
- Water access
- Picnic facilities
- Skatepark

Recreation Programs

- Adult Community Center
- Sports and fitness
- Indoor Tennis Center
- Golf course
- Cultural and specialized activities
- Special events



Nearly 1,000,000 participant hours

Over 250,000 special event attendees



Community Needs Assessment

Community Needs Assessment

Identifying Needs

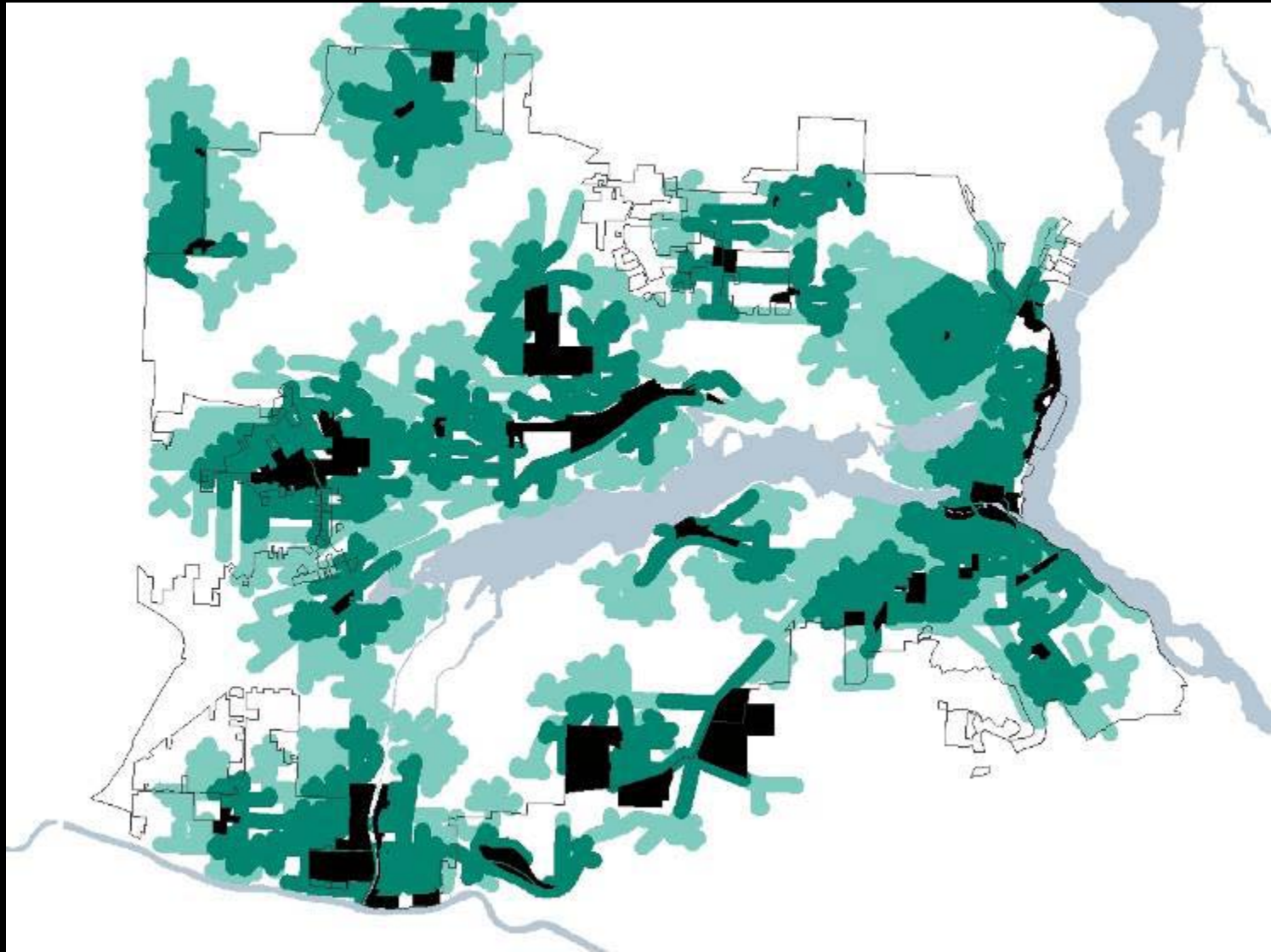
- Park land and essential facilities
- Recreation variety
- Program needs
- Natural resource management
- Maintenance needs

Essential Services

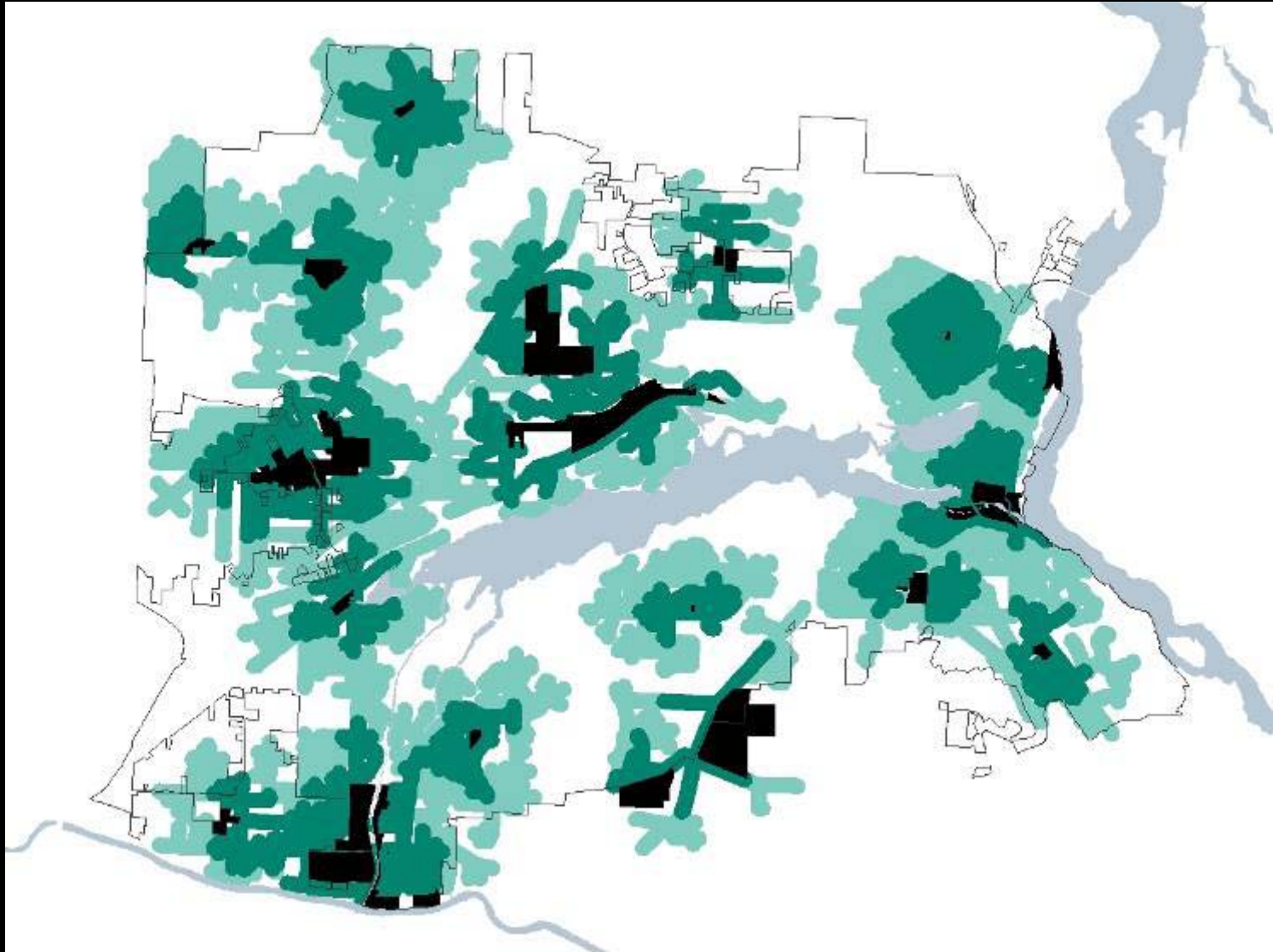
- Exercise and Sports
- Play for Children
- Experience Nature



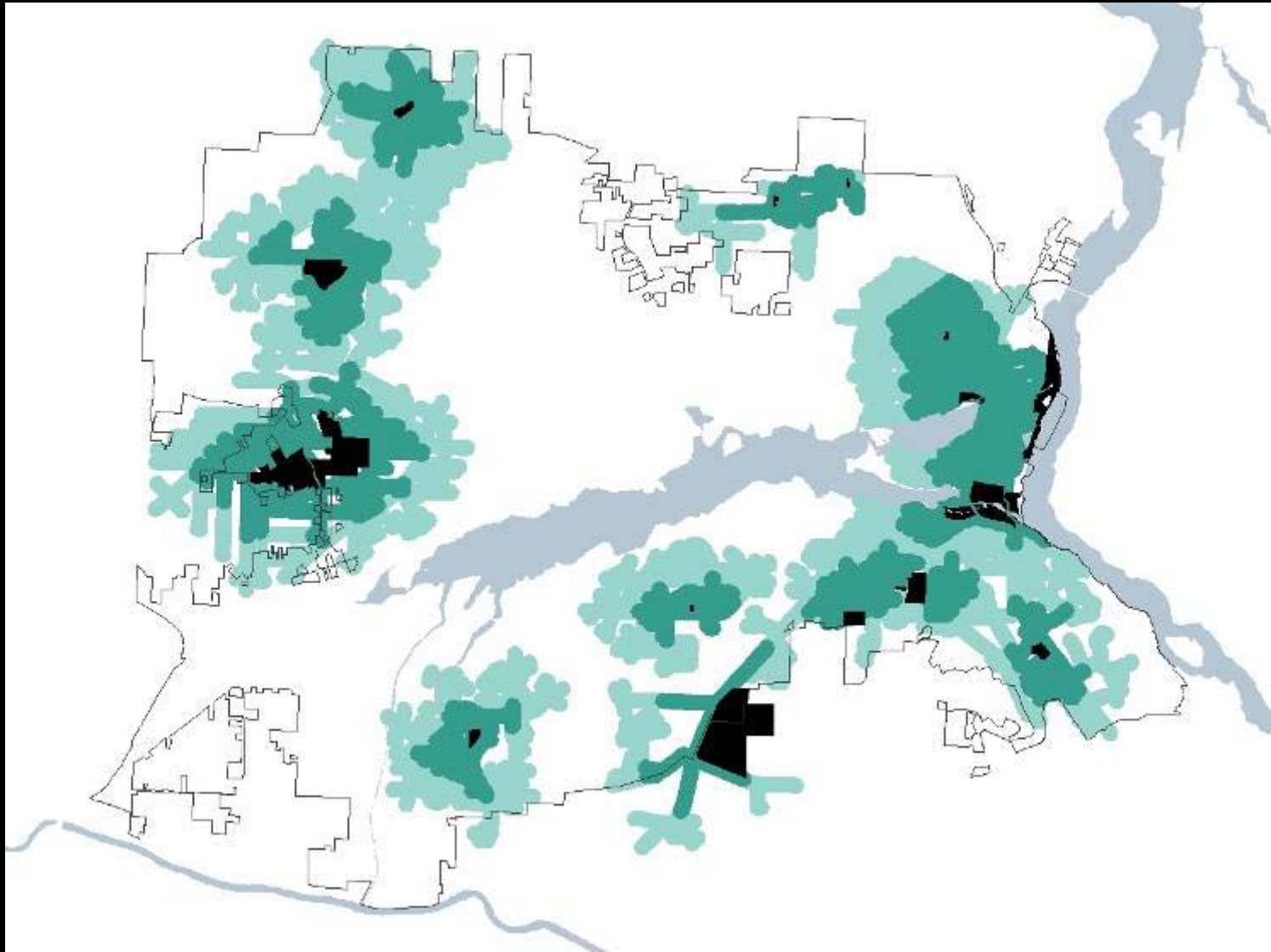
Essential Services: Experience Nature



Essential Services: Exercise and Sports



Essential Services: Play for Children



Additional Community Needs

- Sports (field and court sports)
- Swimming (pools)
- Water/shore access
- Indoor programming space
- Trails (Walking, hiking, jogging, and bicycling)
- Nature play areas
- Natural/cultural interpretation
- Off-leash dog park access
- Gardening
- Special events (outdoor)
- Family and group celebrations
- Skateboarding

Natural Resources

- Existing resources, while not unique regional habitats, are important to the community's identity and to environmental quality
- Need stabilization projects and management plans
- Long-term stewardship
- Focus areas: water edge and habitat connectivity





Comprehensive Plan Integration

Comprehensive Plan Goals and Policies

Policy Relationship:

Comprehensive Plan Policies = Major goals for Parks Plan 2025

Parks Plan 2025 policies = 15,000' level guidance

Parks Plan 2025

Parks & Recreation policies integrated with Comp Plan

Implements Comp Plan policies

Next Steps

PARKS PLAN 2025

LAKE OSWEGO

Parks, Recreation and Natural Areas System Plan

