

Please indicate by circling how well each scenario implements the Community Vision Action Area, 1 being the highest.



Community Culture



Complete Neighborhoods & Housing



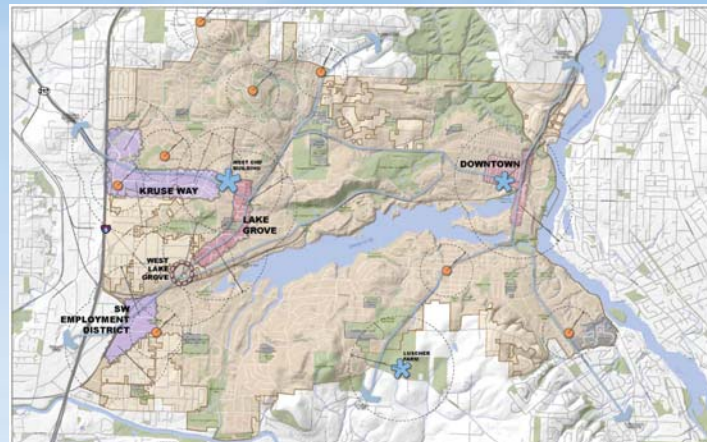
A Connected Community



Economic Vitality

Existing Comprehensive Plan

Circle one: 1 2 3



- Provides consistent support for the library, farmers' market and parks and recreation program.
- City and school district continue to partner in maintaining excellent schools.

Circle one: 1 2 3

- Provides the existing zoning for growth and development that you see today in the city.
- Encourages future development equally throughout Lake Oswego which may impact neighborhood character.

Circle one: 1 2 3

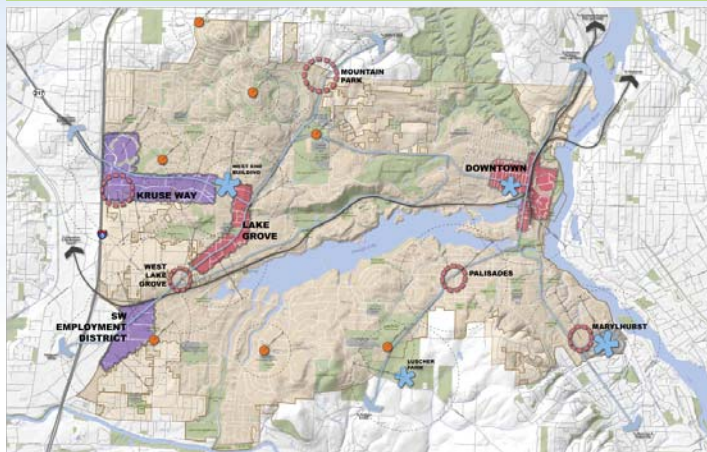
- Provides the opportunity for the streetcar and light rail.
- Transit service to downtown will likely be the same or improve slightly.
- Job growth may result in improved transit service on Kruse Way and Boones Ferry and the Country Club and Highway 43 corridors.
- Pedestrian and bicycle improvements will continue much as they have to date.

Circle one: 1 2 3

- Employment is focused in existing areas.
- May not provide sufficient diversity in permitted employment uses and locations, particularly for home-based businesses and a greater range of employment uses in industrial areas.

Village Centers

Circle one: 1 2 3



- Builds upon the existing comprehensive plan.
- Jobs, services and recreation opportunities within walking or biking distance of housing. Increased community interaction strengthens the social fabric.
- Increases opportunity for activities, public art, food carts, farmers' markets in new public plazas and several neighborhood hubs throughout the city.
- Supports diverse housing opportunities that can attract young families to support the schools.
- Marylhurst/Mary's Woods area is developed into a neighborhood mixed-use and civic/cultural area.

Circle one: 1 2 3

- Supports the 20-minute neighborhood concept of jobs, services and recreation opportunities within walking or biking distance of housing.
- Provides a range of housing opportunities, including for first-time buyers, empty-nesters and young professionals.
- Helps preserve the character of existing neighborhoods by encouraging growth in town centers and neighborhood mixed-use areas.

Circle one: 1 2 3

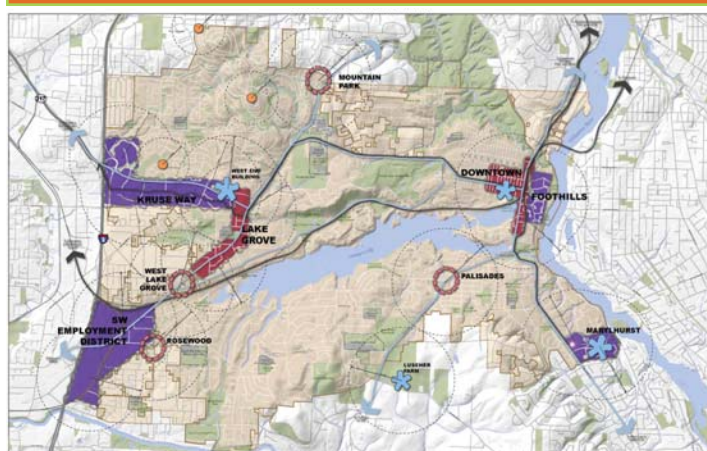
- Provides the opportunity for the streetcar and light rail.
- Fewer car trips needed to accommodate daily needs.
- Transportation focuses on improved pedestrian and bicycle connections within and between centers and mixed-use areas.
- Greater demand for transit service within the city.

Circle one: 1 2 3

- Focuses public investments in the mixed-use areas to help attract employment opportunities of various types and sizes.
- Provides increased opportunities for in home and/or small scale jobs closer to home, in neighborhood mixed-use areas and town centers.
- Creates opportunities for job growth which can result in a positive net fiscal benefit.

LOconomy

Circle one: 1 2 3



- Increases opportunity for activities, public art, food carts, farmers' markets in new public plazas – focused on the east and west sides of the city.
- Supports more housing opportunities that can attract young families to support the schools – focused on the east and west sides of the city.
- Emphasis is placed on developing Marylhurst as an educational and cultural resource for the community.

Circle one: 1 2 3

- Focuses new jobs and future investment on the east and west sides of Lake Oswego.
- Encourages a range of housing options in strategic east and west side locations, which helps preserve character of existing neighborhoods.

Circle one: 1 2 3

- Provides the opportunity for the streetcar and light rail.
- Accommodates existing levels of car traffic and reduces the number of work-related automobile trips.
- Transit ridership greater due largely to the ability to serve concentrations of employment and housing.
- Pedestrian and bicycle enhancements are focused within east and west side districts.

Circle one: 1 2 3

- Emphasizes job growth in Downtown, Kruse Way, Lake Grove and the SW Industrial District.
- Creates more opportunities for job growth which can result in a positive net fiscal benefit.

Feedback Form: The Citizen Advisory Committee Wants to Hear from YOU!

Please indicate by circling how well each scenario implements the Community Vision Action Area, 1 being the highest.



Healthy Ecosystems



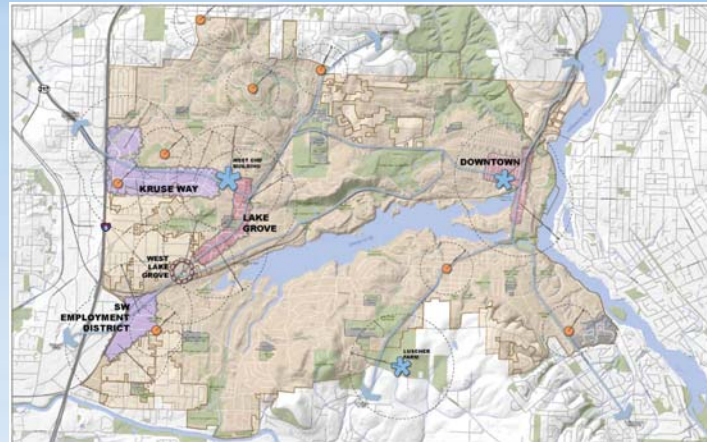
Community Health & Public Safety



Inspiring Spaces & Places

Existing Comprehensive Plan

Circle one: 1 2 3



- Policies provide opportunities for innovative natural resources management including “ecosystem services” – e.g., better integration of public facilities by using available natural systems.
- Continues current land use and development patterns, in part relying on infill development in low density areas.
- Continued infill on undeveloped land may increase impervious surfaces and affect protected tree groves, streams and wetlands.
- Little or no reduction in automobile trips or increase in frequency of transit service, to decrease greenhouse gas emissions.

Circle one: 1 2 3

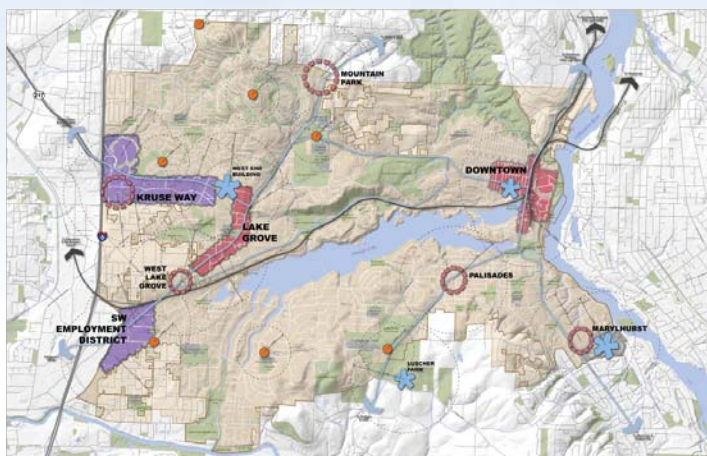
- *Maintains excellent police and fire services.*
- Farmers’ market continues on the east side of town in Millennium Park during the summer.

Circle one: 1 2 3

- *Excellent community design and aesthetics is maintained.*
- *Maintains the existing urban growth boundary.*
- Continue to develop distinct places in the downtown and Lake Grove areas.

Village Centers

Circle one: 1 2 3



- Development is focused in mixed-use centers, which decreases the pressure to develop in more natural areas.
- Less air quality impact since people have more opportunities to walk or bike to jobs, services and recreation.
- Builds upon Existing Comp Plan.

Circle one: 1 2 3

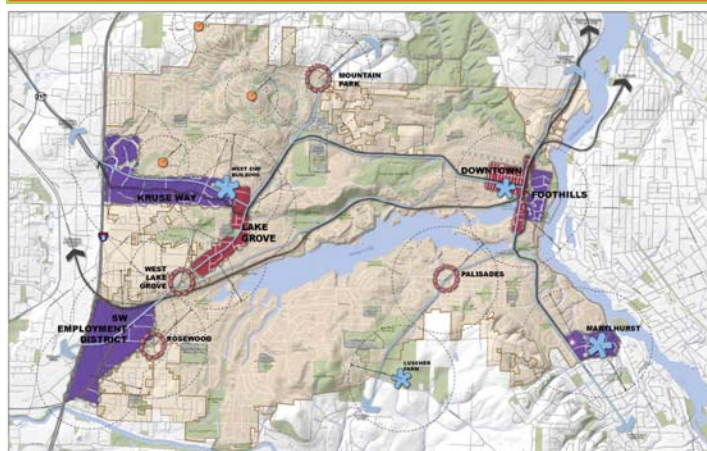
- *Maintains excellent police and fire services.*
- More attention to developing a city-wide network of walkways and bikeways that connect centers and hubs to adjacent neighborhoods.
- New public gathering spaces provide the opportunity for more locations and frequency of farmers’ markets and other community events.

Circle one: 1 2 3

- *Excellent community design and aesthetics is maintained.*
- *Maintains the existing urban growth boundary.*
- Supports more opportunities to develop distinct spaces and places in existing commercial areas and small neighborhood centers.

LOconomy

Circle one: 1 2 3



- Development is focused in east and west side districts, which decreases the pressure to develop in more natural areas.
- Air quality improves due to increased transit service for more Lake Oswego employees.
- Builds upon Existing Comp Plan.

Circle one: 1 2 3

- *Maintains excellent police and fire services.*
- Walkways and bikeways connect neighborhoods to adjacent commercial and employment centers on the east and west parts of town, there is less emphasis on the east-west connectivity.

Circle one: 1 2 3

- *Excellent community design and aesthetics is maintained.*
- *Maintains the existing urban growth boundary.*
- Larger scale commercial development and associated amenities is transit oriented and focused on the east and west ends of the city.

Feedback Form: The Citizen Advisory Committee Wants to Hear from YOU!